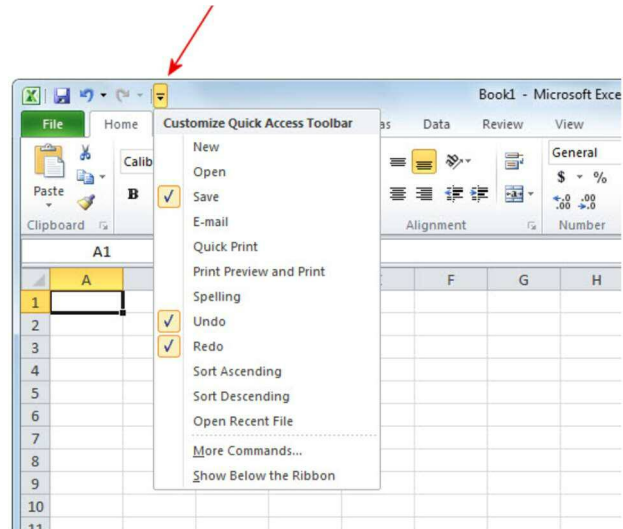


## HOW TO INSTALL GRAPH2020.XLAM

- 1) Save the file graph2020.xlam on desktop
- 2) Open Excel
- 3) Reduce the size of the Excel window
- 4) Click on file in the menu
- 5) Choose “Excel options” (on the bottom, to the right)
- 6) Choose “add-ins” in the menu to the left
- 7) Choose Manage: Excel add-ins (on the bottom)
- 8) Click “go”
- 9) Click “Browse”
- 10) Drag the file graph2020.xlam from your desktop to the Add-Ins window that just opened
- 11) Click once on graph2020.xlam
- 12) Click “OK”
- 13) Check the box “graphique de science”
- 14) Click OK

You must then create a button to use this file

- 15) Click on arrow on the right of the quick Access toolbar



- 16) Choose “More Command”
- 17) In “Choose command from:”, choose Add-Ins
- 18) Select “graphique de science” and then click “add” to add it to the “Customize Quick Access Toolbar” (Be sure to have “For all documents (default)” just below “Customize Quick Access Toolbar”)
- 19) Click OK

It is now ready. To make it work:

- 20) Enter your data on an Excel sheet
- 21) Click on your icon on the quick tools access bar (Upper left corner)
- 22) Have Fun

Luc